



YOUR GUIDE TO Valet Selling

with JBF Mid-Cities/Grapevine

No Time to Tag? We Can Help!



We have a team of **Pro Valet Taggers** that are here to take the work out of selling all your quality items at our upcoming Mid-Cities/Grapevine sale! This guide will help you get your items ready.

- 1 Inspect
- 2 Organize
- 3 Drop Off



midcities.jbfsale.com



[Consignor Community Group](#)



[Instagram](#)

Pricing & Fees

How much does it cost?

Consignor Fee

\$12

All consignors are required to pre-pay consignor fee at the time of sign up

Supply Fee

\$20

This goes towards all supplies to tag your items for the **first 200 items** plus \$5 for every 50 additional items (rounded up)

No Thank You's

\$.25 each

After 5 pulled 'no thank you' items, you will be charged **\$.25** per pulled item

Batteries

\$1 each

Make sure to check that all items are working and replace any non-working batteries before dropping off to avoid fee

*Consignor fee and supply fee will be paid at the time of sign up; all other valet fees (battery, 'no thank you', additional supply fees) will be deducted from your consignor check.



If 25 or more items are rejected by the tagger, the tagger has the option to decline the tagging job and your consignor fee and initial supply fee will not be refunded. Your items will be returned to you.



Inspect

Our Quality & Safety Standards

It is our mission to provide quality and safe items for our shoppers. **Every consignor is responsible for inspecting each item before Drop Off** to ensure they follow our quality and safety standards below:



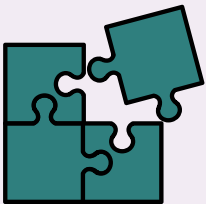
Clean

All items in great condition. Free of stains, rips & odors



Compliant

All items have been checked w/ safety & recall guides



Complete

All pieces are included & in working order

JBF Price
50-90%
off retail

Current

All items are in current season & priced appropriately

Please make sure all clothes have been washed and inspected for stains/excessive wear/holes.

Toys need to have batteries (if needed) and be in good, working condition.

All other items need to be current and clean.

Gather Items

Check all over your home!

Bedrooms

- clothing + shoes
- lamps + rugs
- gliders + rockers
- boppies + monitors

Closets

- sheets + towels
- diapers + new supplies
- step stools
- pillows + blankets
- maternity wear

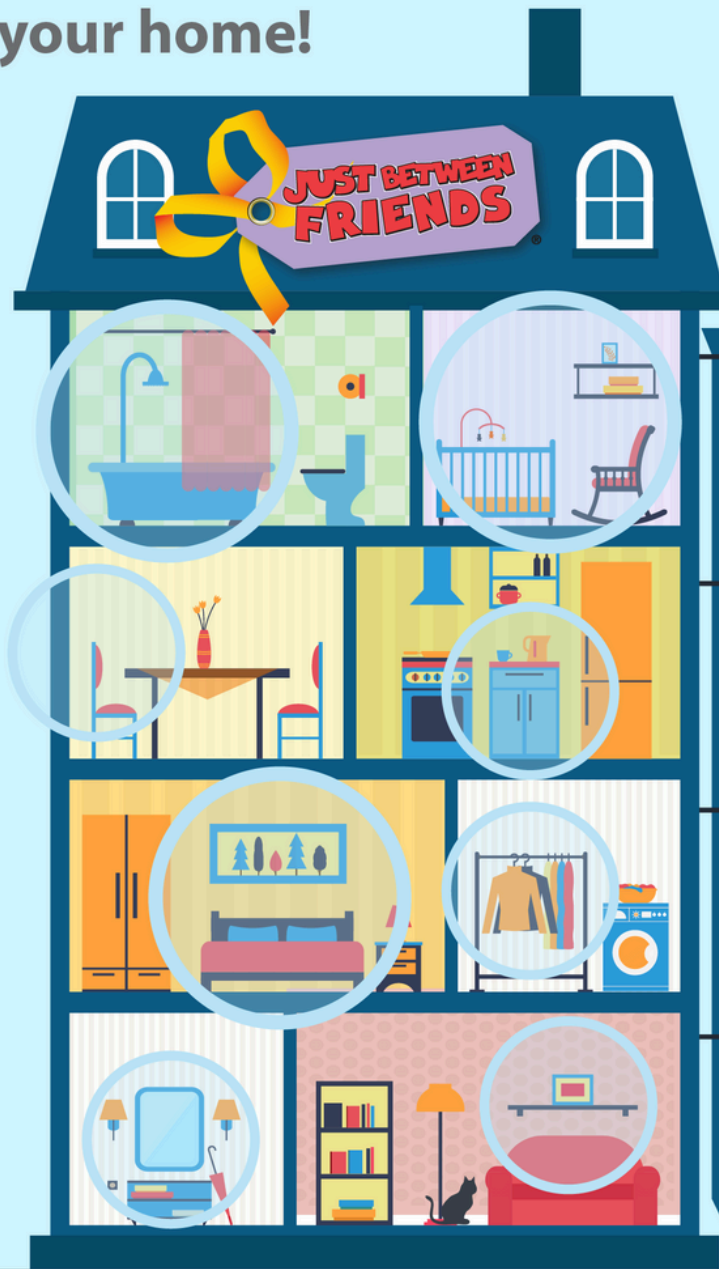
Playrooms

- puzzles + games
- family DVDs
- dress up + costumes
- crafts + supplies
- instruments
- gaming systems

Bathrooms

- diaper disposal systems
- bath toys + supplies
- newborn tubs

...and check the garage!



Have any of these hot-selling items?

Large toys

- exersaucers
- rockers
- play kitchen sets
- tool bench play sets

Furniture

- toddler beds
- dressers + bassinets
- rockers + bouncers
- changing tables

Feeding supplies

- new pacifiers
- dishes + lunch boxes
- sippy cups + boosters
- safety items

Outdoor toys

- bikes + trikes
- scooters + skates
- ride-on toys
- playhouses



SUMMER 2025 ITEM LIMITS

MATERNITY CLOTHING



10
TAGS

BEDDING & BLANKETS
(KIDS BEDDING ONLY)



10
TAGS

PLUSH TOYS



5 TAGS
Licensed plushes are unlimited!

MOMMY MART



10
TAGS



WHAT TO SELL CLOTHING

ALL SEASON

Item Limits: Please bring your best hanging clothing items which includes up to **20 junior** and up to **10 maternity** sizes. Clothing must be produced **within the past 5 years**. Max **5 plush toys** (unlimited licensed plushes), Max **10 bedding/blankets**, Max **10 Mommy Mart**. (1 item = 1 tag.)

short and long-sleeved items: onesies (please bundle!), shirts, dresses



leggings
long pants, jeans
shorts, skirts



pajamas
sleepers
sleep sacks



shoes, boots
rain boots
Crocs, sandals



coats, light jackets,
sweatshirts, sweaters
accessories



swimsuits
lifejackets



holidays
costumes
dress up



'NO THANK YOU' ITEMS

There are some items we know we cannot sell right now.

To those items, we say no thank you for now - but they might be acceptable for a future sale.

- X school t-shirts with dates
- X camp type shirts
- X snow boots
- X winter jackets
- X gloves
- X heavy winter gear

X puddle jumpers





WHAT TO SELL OTHER ITEMS

ALL YEAR

ALL ITEMS MUST BE SOLD/MARKETED FOR CHILDREN OR THE CARE OF CHILDREN
AND BE MANUFACTURED WITHIN THE PAST 10 YEARS.

Plates, cups, utensils



NEW nipples, pacifiers
bottles with nipples
removed



character or animated
stuffed animals (max of
5/unlimited licensed
stuffed animals)



soft infant toys WITH
sound/rattle



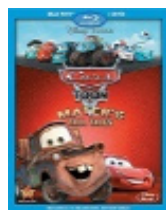
cribs, toddler-twin beds
bed rails, co-sleepers
bassinets



books: soft, board
picture, chapter
educational, tween
parenting



DVDs: rated
G and PG only



'NO THANK YOU' ITEMS FOR ANY SEASON

X formula
X food

X USED nipples
X USED pacifiers

X basic stuffed animals
X basic soft baby toys

X no "grab bags" unless
items are the same (all Paw
Patrol, matchbox cars etc.)

X drop-side cribs
X crib bumpers
X baby wedges
X full+ size beds

X adult books
X cookbooks
X self-help books

X PG-13 and R-rated DVDs
X adult content DVDs
X VHS tapes
X CDs

Mommy Mart
X glass
X used candles
X used makeup/lotion
X anything older than 5
years



Safety Matters



CAR SEATS: WAIVER REQUIRED

All Car Seats must be checked for recalls before selling at JBF. www.cpsc.gov/Recalls A completed **Car Seat Waiver** is required for all car seats and booster seats.

CAR SEAT WAIVER



CRIBS: WAIVER REQUIRED

All Cribs made before **June 28, 2011** are no longer considered safe for infants. For cribs manufactured on or after the date above, a completed **Crib Waiver** is Required.

CRIB WAIVER

INFANT SLEEP PRODUCTS

JBF accepts cribs, bassinets, cradles, bedside sleepers, and play yards that meet current Safety Standards set by the Consumer Product Safety Commission and JBF quality/condition standards.

For all other items marketed or intended to provide a sleeping accommodation for an infant up to 5 months of age, the product must have a stand, meet stability requirements, and have a side height of at least 7.5 inches. **All other infant sleep products are not accepted for resale at JBF.**

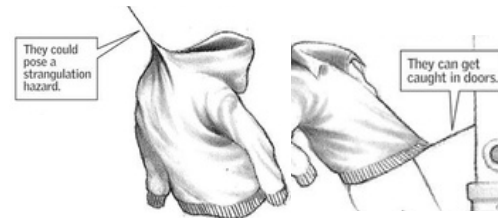


HIGH CHAIRS



High chairs must have all original straps and buckles

DRAWSTRING SAFETY



Upper Outerwear WAIST Drawstrings should be 3-inches or shorter and sewn to garment at mid-point so string cannot be pulled to one side.
Upper Outerwear NECK Drawstrings should be removed completely.

Mommy Mart

Item Limit: 10 Tags



Kitchen: New/Like New Items

Kids Room & Nursery Décor

Current & Complete



Storage: Baskets & Organizers



Decor: Like New, Current & Trendy



Decor: Like New, Current & Trendy



Gifts: New & Unused Beauty, Bath, Hair Items, & Candles



Gifts: New/Like New Baby Shower Gifts



Large Items

These items are a "YES!" at any of our sales (and they usually sell well!)

Safety First: All items must meet safety standards. Please check for recalls and be sure all safety straps are included.



Clothing & Fabric Items

YES!



Items are **CLEAN** with
NO STAINS
NO HOLES
NO EXCESSIVE WEAR



Is it clean?

After 5 'no thank you' items, you will be charged **\$.25** per 'no thank you'.

No Thank You



Items with stains



Items with pilling/ excessive wear



Items with tears/ holes



Items with odor/ stains

Shoes

YES!

No Thank You



Shoes are **CLEAN**
No stains, no tears
and clean soles



Shoes have
excess wear
& have tears



Shoes have
dirt, stains and
dirty soles



**PRO TIP: Use
Magic Erasers
to clean the
rubber soles**



Is it clean?

YES!

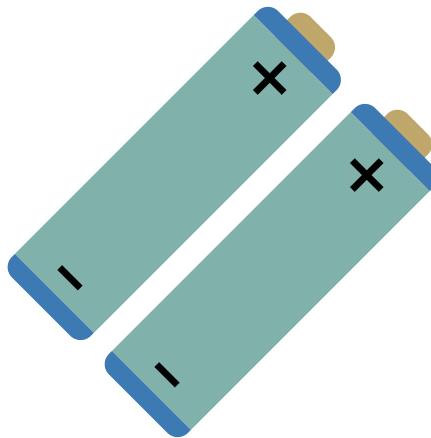
No Thank You



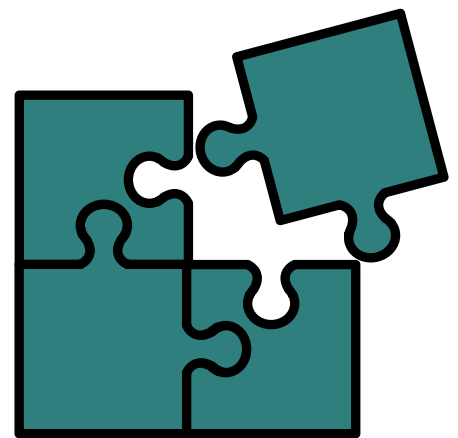
Questions while you inspect your items:



Is it clean?
Is it safe?



Does it work &
have batteries?



Are all pieces
included?



Let's Get Your Items Packed Up

You did it! Here's how to group items for your Valet Tagger.

Clothing

- Girls
- Boys
- Basics
- Accessories
- Maternity
- Costumes/ Dress Up

Non-Clothing

- Baby Essentials
- Books/Educational
- Games/Puzzles
- Infant/Toddler Toys
- Kids Toys
- Outdoor/Sports

Large Items

- Equipment has ALL parts & pieces together
- Items are not on Recall List
- Car Seats & Cribs have a filled out waiver per item



Please pack your items in cardboard boxes and not totes. Valet taggers are not required to return totes and we do not have space to store them at the sale.



Valet Drop Off

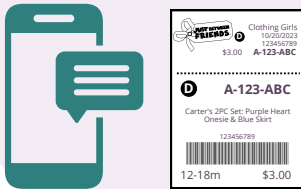
1

Once matched with your Valet Tagger, they will contact you. Please make sure you respond within 3 days to coordinate a day & time to meet up



2

Valet Tagger will notify you once items have been tagged



3

Valet Tagger will store, transport, & place items on sales floor at Drop Off





Mid-Cities/Grapevine



CONSIGNOR SCHEDULE SUMMER SALE: MAY 14 - 19

Thursday,
May 15

TICKETS REQUIRED

EARLY ACCESS PRESALE

2:00pm

10+ hour team members

3:00pm

Social Ambassadors + 2 Guests

4:00pm

PRIME TIME SHOPPING

\$15 ticket online

5:00pm

Consignors + 2 Guests

REGISTERS CLOSE AT 8:30P

Friday,
May 16

TICKETS REQUIRED

EARLY ACCESS PRESALE

9:00am

First Time Parents + Grandparents

Foster + Adoptive Families

Teachers + Homeschool Parents

Military Families

First Responders + Healthcare Workers

Friday
May 16

TICKETS REQUIRED

10:00am - 8:00pm

OPEN TO THE PUBLIC

\$3 entry fee or

FREE with online ticket!

Saturday,
May 17

TICKETS NOT REQUIRED

9:00am-4:00pm

OPEN TO THE PUBLIC

Saturday,
May 17

TICKETS REQUIRED

EARLY ACCESS HALF PRICE SALE

4:30pm

10+ hour team members

5:00pm

Social Ambassadors + 2 Guests

5:30pm

Consignors + 2 Guests

6:00pm - 8:00pm

PRIME TIME SHOPPING

\$5 ticket online

★ *Items without a star on the tag are an ADDITIONAL 50% off! ★

Sunday,
May 18

TICKETS NOT REQUIRED

HALF PRICE SALE

10:00am - 4:00p

OPEN TO THE PUBLIC

Last day to shop!

REGISTERS CLOSE AT 5:00P

★ *Items without a star on the tag are an ADDITIONAL 50% off! ★

Wed, May 14 + Thurs, May 15

Drop Off

schedule on drop off form

Monday, May 19

Pick Up

4:00-6:00pm

items must be picked up by 6:01pm

Nytex Sports Centre

8851 Ice House Drive
North Richland Hills, 76180



midcities.jbfsale.com



[Consignor Community Group](#)



[Instagram](#)

